

Indo-German Energy Programme (IGEN)

Energy Efficiency in Industry & Data



Implemented by



1

GIZ

Wholly owned by the Government of the Federal Republic of Germany
Service providers on behalf of the whole of German Government



Over 50 years of experience and expertise in a range of thematic areas

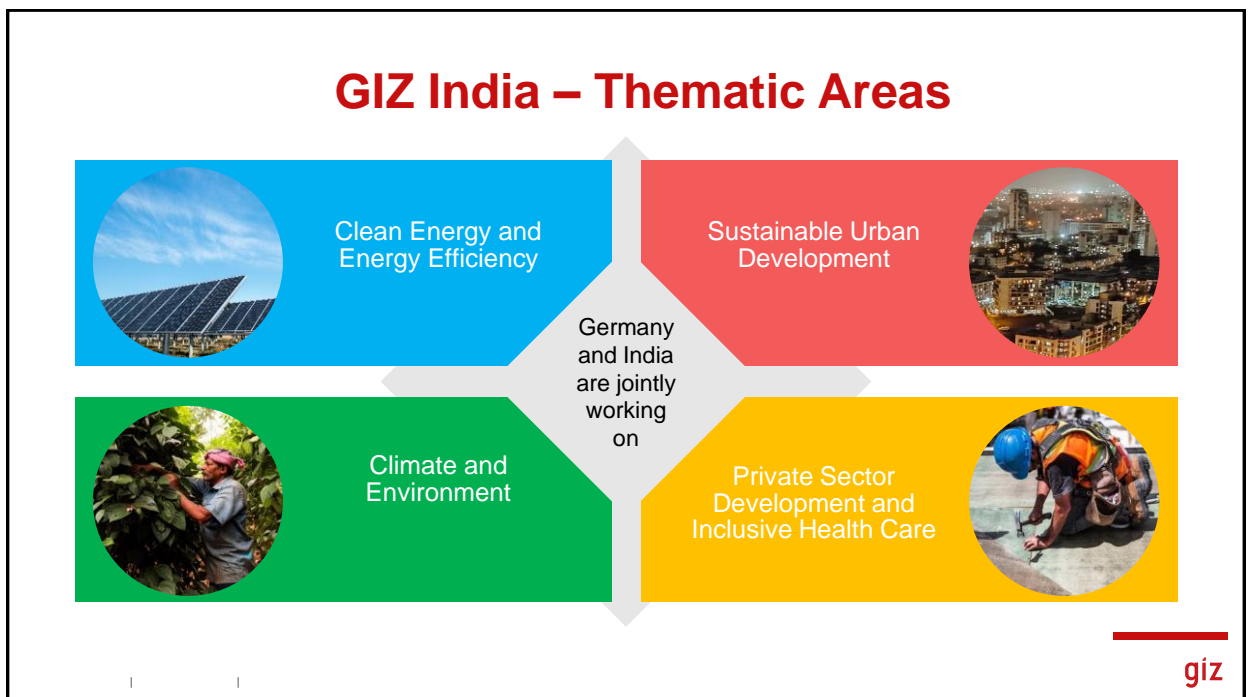
Energy II Environment II Climate Change Natural Resource Management II Skills & Vocational Training
Education II Water II Health II Good Governance.....and many more!!

giz

2



3



4

GIZ in India – Impacts

Energy Efficiency

The Indo-German program for Energy Efficiency saves **over 90 million tonnes CO₂** per year

Climate Adaption

Climate Adaption projects improve **water security for 2.8 million people**. **State climate action plans** enhance climate resilience of **150 million people**

Green Urban Mobility

Projects under the Indo-German Partnership for Green Urban Mobility will improve **Metro and bus services for 1.5 million people**

Green Innovation Centers

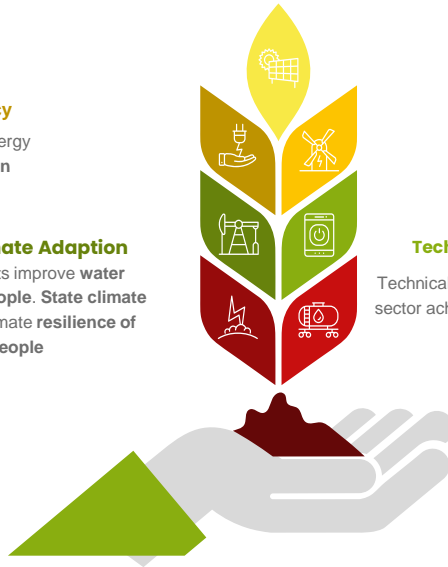
Green Innovation Centres and ProSoil increase productivity and **income of 139,000 farmers** and **rehabilitation and protection of 153,000 hectares of soil**

Technical assistance

Technical assistance for the Solar Rooftop sector achieved upskilling of **60,000 young solar engineers**

Private Sector Development

Private Sector Development & Vocational Education and Training provided cooperative training opportunities **have skilled 11,000 youth across 4 Indian states**



giz

5

Energy Efficiency

giz

6

IGEN-EE Achievements



1st Indo-German energy efficiency project launched between GTZ and EMC, in 1995, followed by **EC Act 2001**, and establishment of **BEE**

Support towards formation of **EESL**



Implementation of PAT scheme including its deepening and widening - **92.3 Million tonnes Of CO2 reduction** • **21.95 Million Tonnes of Oil Equivalent energy savings**

- **Brick Industry Market Transformation:** Developed and Approved- market approach for encouraging energy efficiency in Brick manufacturing • Potential Impact- Energy Efficiency Enterprise (E3) Mark for manufacturers



Above 8.4 million school children participated in **national painting competition-2019** on energy conservation



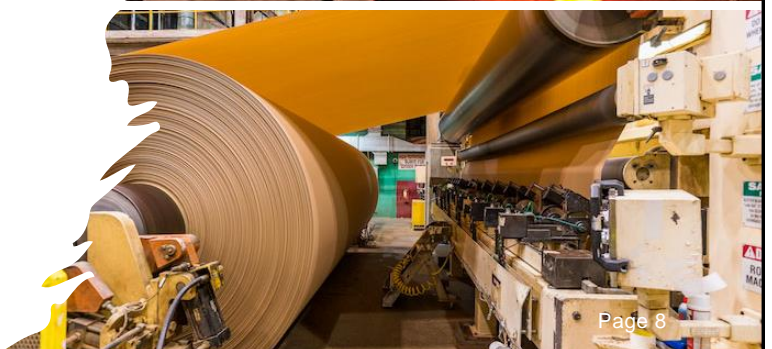
Bachat Lamp Yojana (BLY) – transformation from incandescent bulbs to CFLs



Certification examination for **Energy Managers (EM)** and **Energy Auditors (EA)**

7

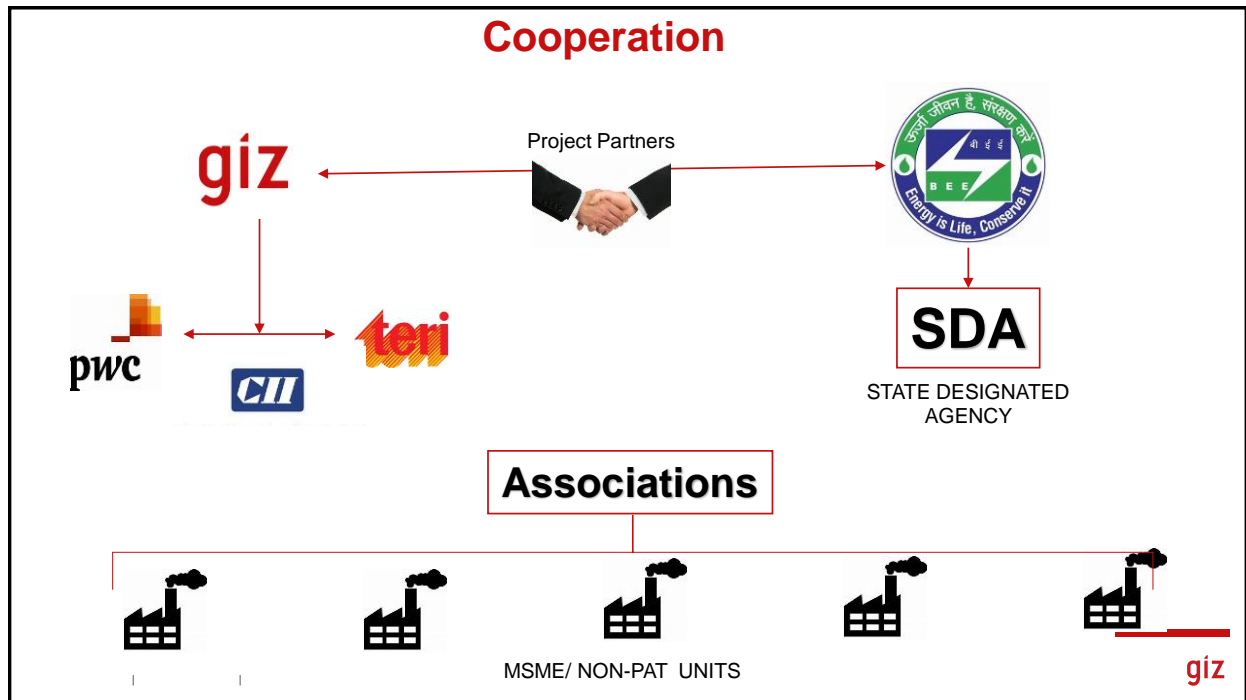
Energy Efficiency in Industry & Data



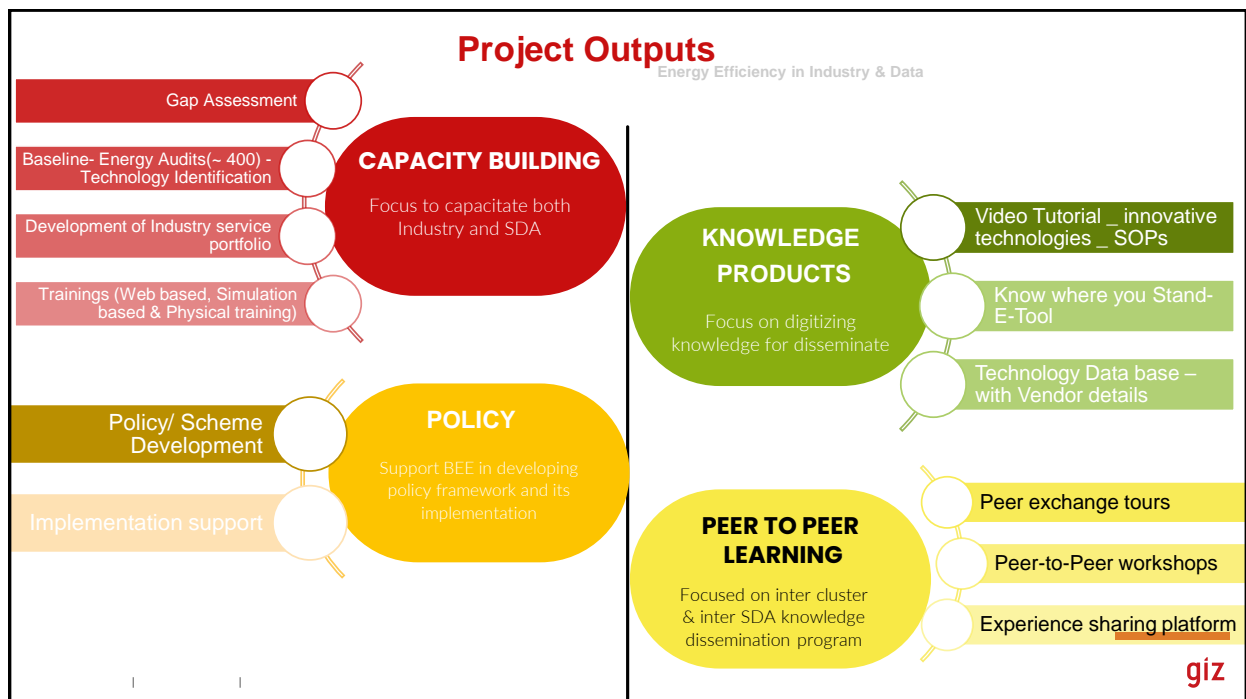
7/3/2024

Page 8

8



9

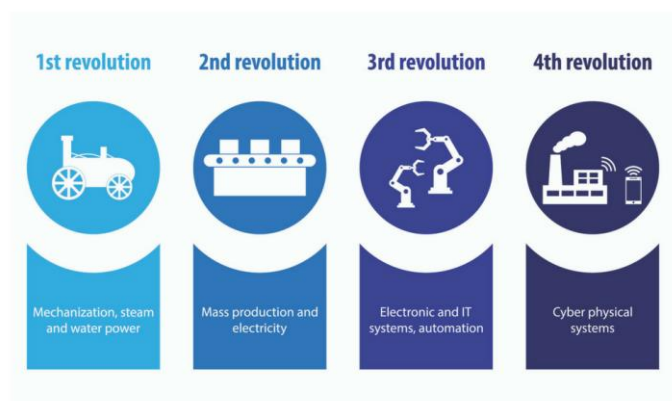


10

Project Interventions for Scaling up



Industry 4.0



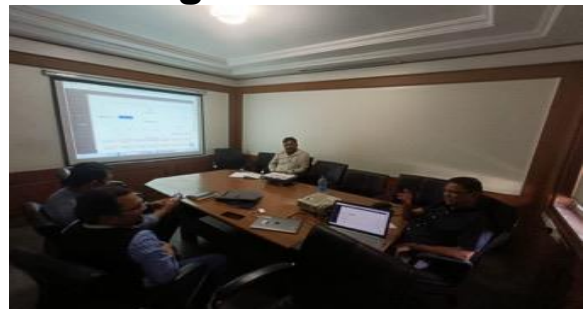
MOU Signing



giz

13

Inception meeting



giz

14

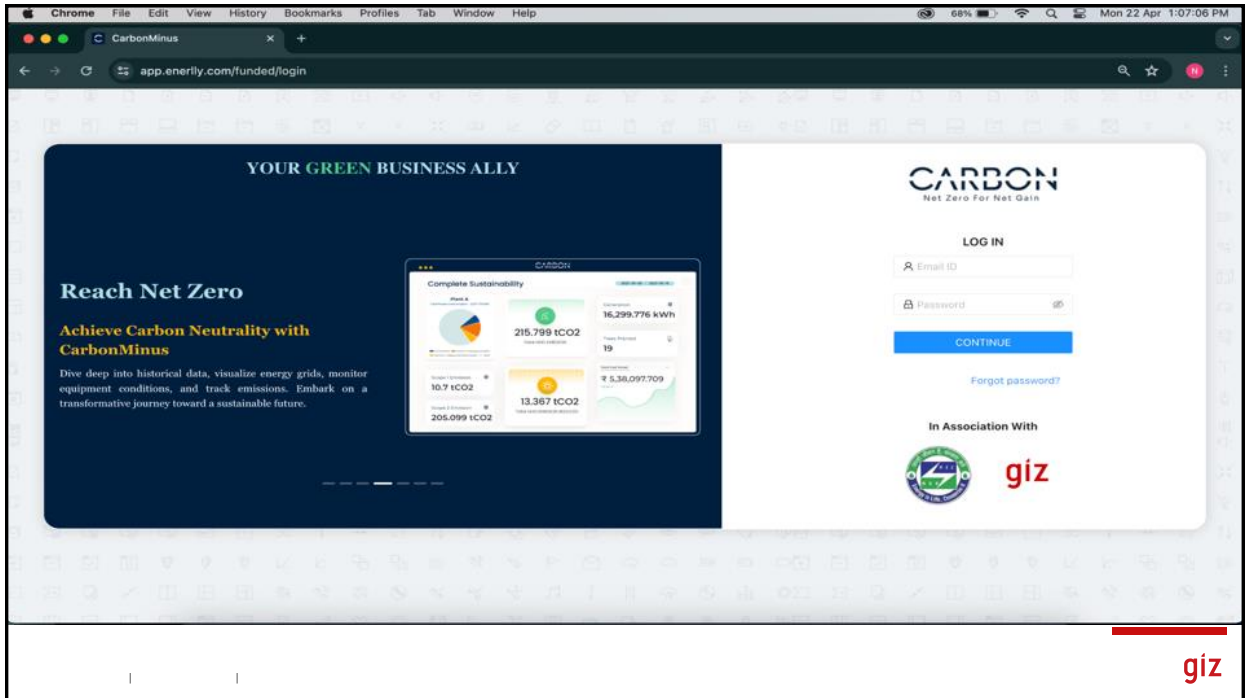


Forging sector

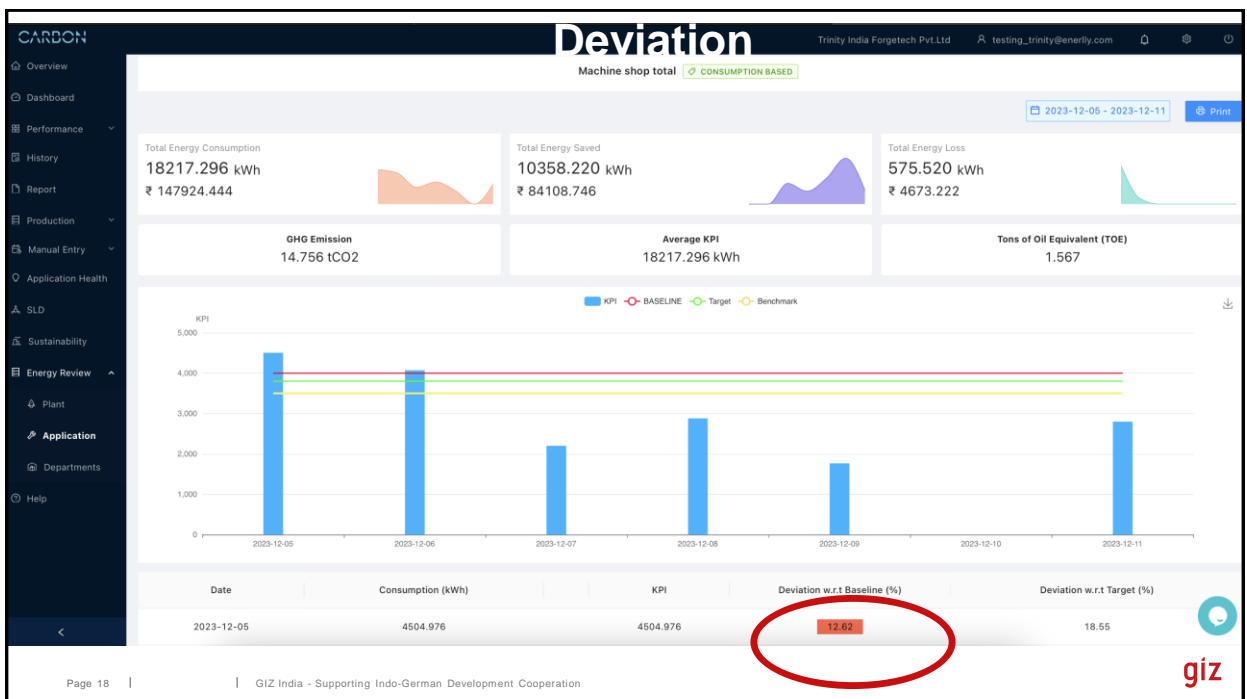
- Plant level data
- Transformers
- Induction billet heaters
- Air compressors
- Cooling towers
- Forging Hammers
- Forging presses
- Department total loads
- Shot blast machine
- Heat treatment furnaces
- Auxiliary total load
- Machine shop total

Foundry sector

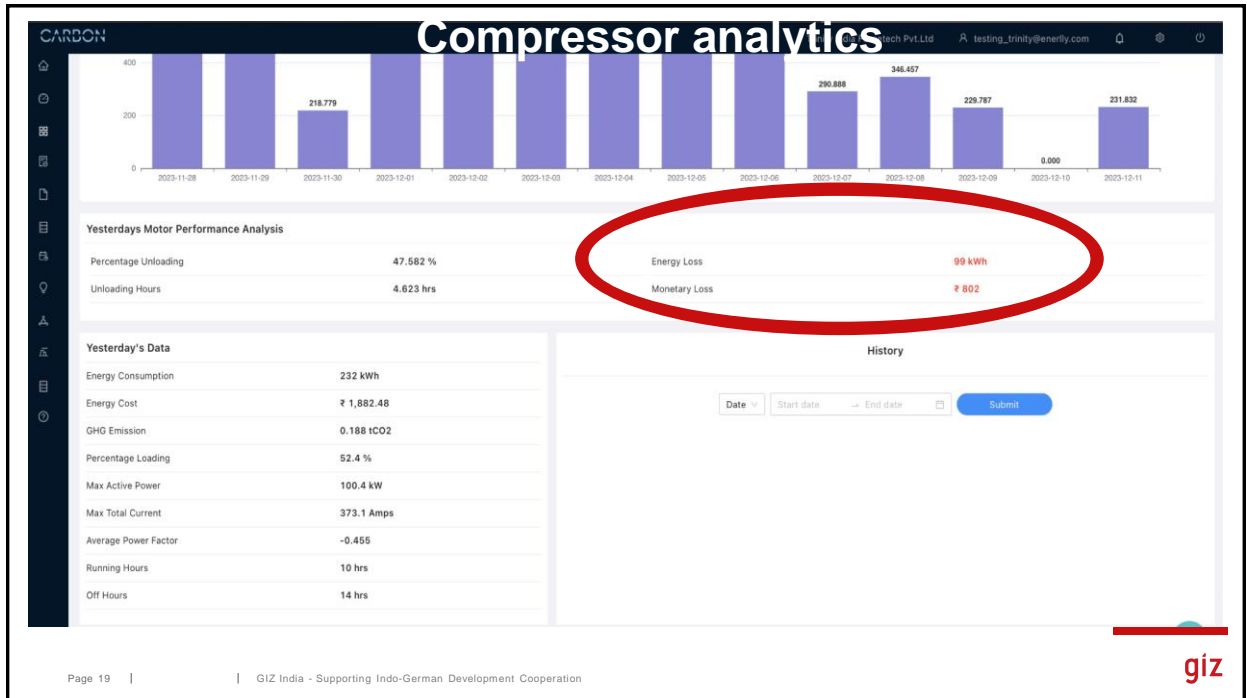
- Plant level data
- Transformers
- Induction Melting furnaces
- Air compressors
- Cooling towers
- Sand plant total
- Sand mixers
- Department total loads
- Shot blast machine
- Lighting
- Auxiliary total load
- Machine shop total



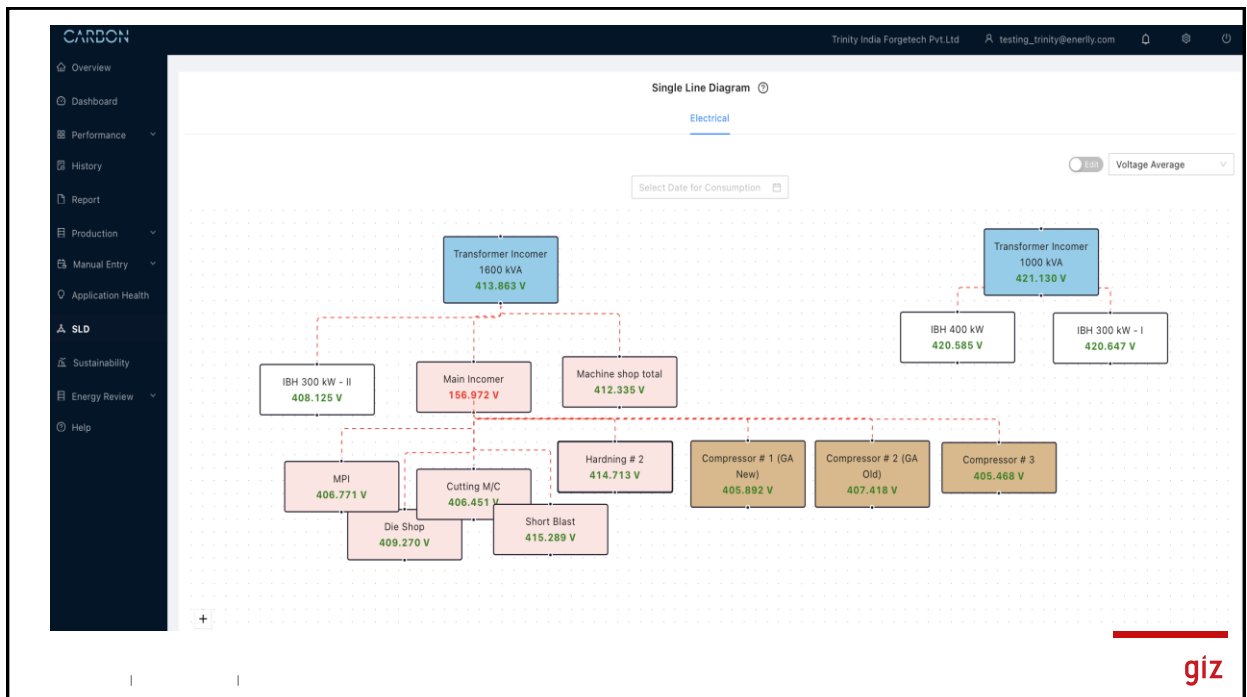
17



18



19



20

Impact: Forging: M/s Trinity India Forgetech Pvt Ltd

Medium scale | % savings: 15.6%

ECM No.	Energy conservation measures	Electricity Energy saving (kWh/year)	CBFS Energy saving (litres/year)	Investment	Monetary Saving	Simple Payback	Energy saving	Emission reduction
				(Rupees lakh)	(Rupees lakh/year)	(Years)	(toe)	(tCO ₂)
1	Pressure reduction in air comp #1, #2 and #3	82,977	0	0	8.3	Immediate	7.1	59.7
2	Air leakage reduction	547200	0	0	5.5	Immediate	4.7	39.4
3	Installation of air manager for forging air compressors	104503	0	5.0	10.5	0.5	8.99	84.65
4	Reduction in Transformer losses by load shifting from TR#2 to TR#1	19,374.34	0	0	1.9	Immediate	16.7	139.5
5	Reduction in drop offs by improving operating practices using ISO50001 EnMS guidelines	57713	0	0	5.8	Immediate	5.0	41.6
6	Heat reflecting coating for heat treatment furnace hardening	0	13500	5	6.8	0.74	13.2	37.0
7	Heat reflecting coating for heat treatment furnace tempering	0	12000	6.0	5.0	1.20	11.8	32.9
Total		8,11,767	25,500	16.0	43.68	0.37	67.4	447.1

giz

21

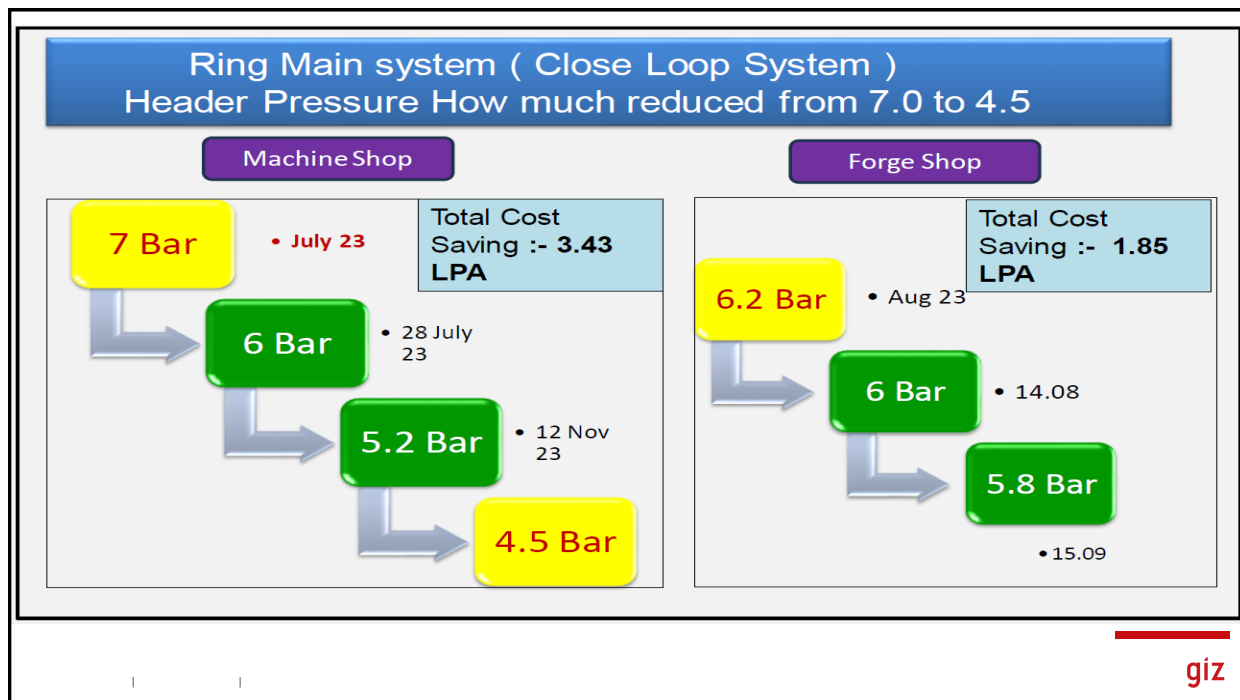
Impact: Foundry: M/s Chougule Industries

Small scale | % savings: 4.67%

ECM No.	Energy conservation measures	Electricity Energy saving (kWh/year)	Investment	Monetary Saving	Simple Payback	Energy saving	Emission reduction
			(Rupees lakh)	(Rupees lakh/year)	(Years)	(toe)	(tCO ₂)
1	Reduction in KPI of Induction melting furnace	1,92,000	0	18.2	Immediate	16.5	138.2
2	Improving FAD of air comp by best operating practices	27529	0	2.6	Immediate	2.4	19.8
3	Energy savings by adding buffer air receiver in compressed air piping network	15,600.00	0	1.5	Immediate	1.3	11.2
Total		2,35,129	0.0	22.3	0.00	20.2	169.3

giz

22



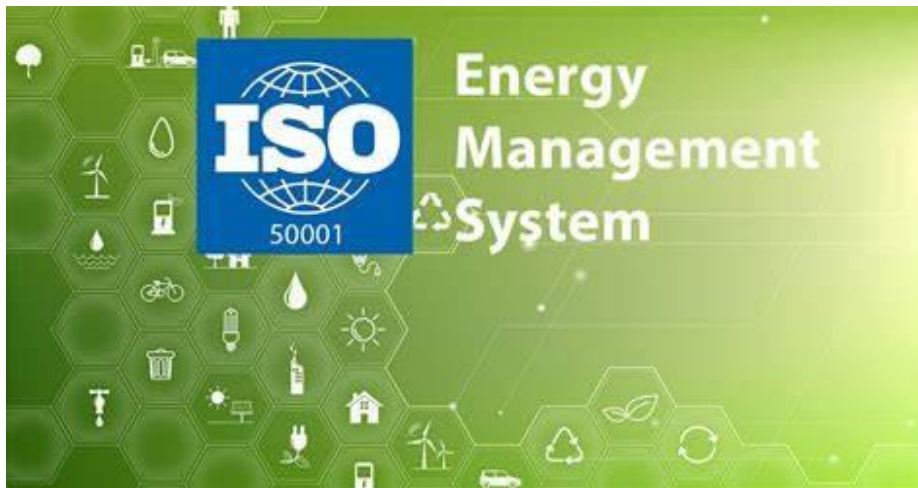
23

Carbon Foot Print Calculation – Current Status

Carbon Footprint- Carbon Emission Sheet											
Sr. No	Type	Unit of Measure	Multiplying Factor to get Kg of CO2	Existing Status (Before Cluster-Up to July 23)		Improved Status as on Feb 24		Action Plan further reduction of carbon Emission	Target Date	Status	Resp
				Consumption Per month	Total Carbon Emission in KG	Consumption Per month	Total Carbon Emission in KG				
1	Electricity	Kwh	0.18	543160	97117	566380	90090				
2	Fuel(Diesel)	Ltrs	0.74	3452	2554.48	1800	2960				
3	Fuel-FO	Ltrs	0.74	50690	35424	50446	35828.58				
4	Compressed Air	Cfm	0.16	36400	5824	77519	10873.92				
5	Aluminium	Kg	0.02	0	0	0	0				
6	Steel/Iron	Kg	0.04	750000	28160	822000	32880				
7	Copper	Kg	0.07	0	0	0	0				
8	Plastics	Kg	2.56	120	307.2	468	962.56				
9	Coolent	Ltrs	1.35	31200	42120	0	0				
10	LPG Gas	Kg	2.93	190	556.7	380	1781.44				
11	Wood	Kg	1.83	450	512	0	0				
12	Oil	Ltrs	1.46	480	2453	5309	9735.28				
13	Coal	Kg	2.73	0	0	0	0				
14	Chemicals	Ltrs	0.73	7	5.11	3	2.19				
15	Paints	Ltrs	1.83	60	219	69	109.8				
16	Transport	Km	0.24	41350	9924	4100	10399.68				
Total Carbon Emission in KG					225176.49		195623				
Total Carbon Emission in Metric tonnes					228		195.62				

Page 24 |
GIZ India - Supporting Indo-German Development Cooperation

24



 giz

25



 giz

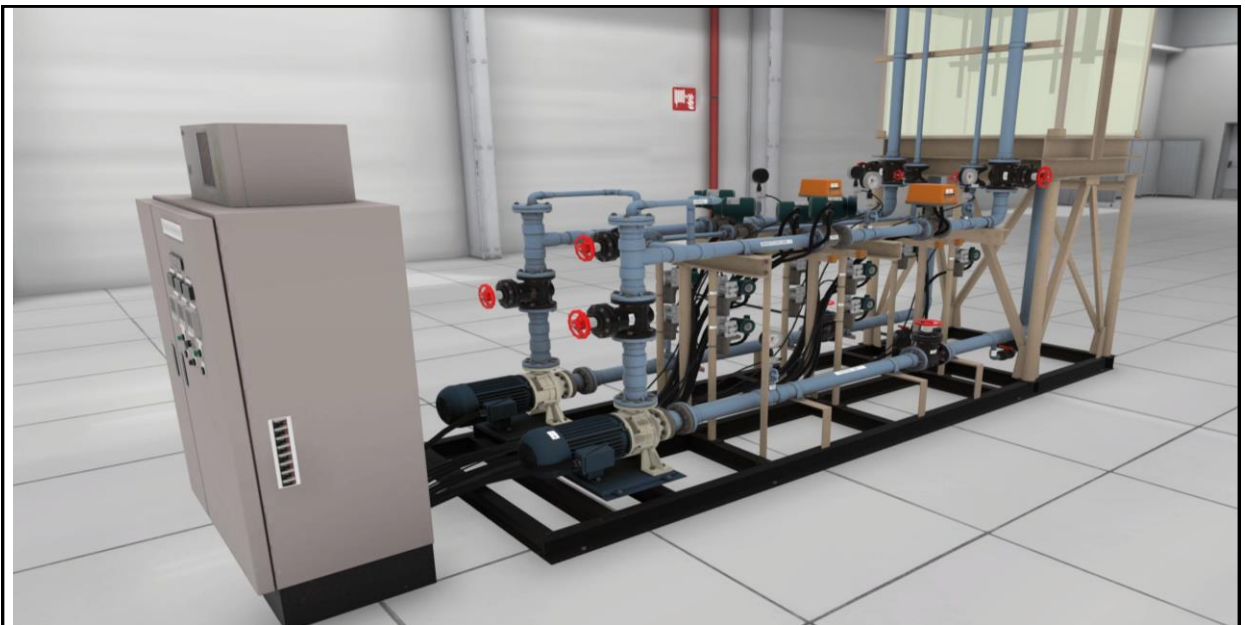
26

DIGI-TWIN



giz

27



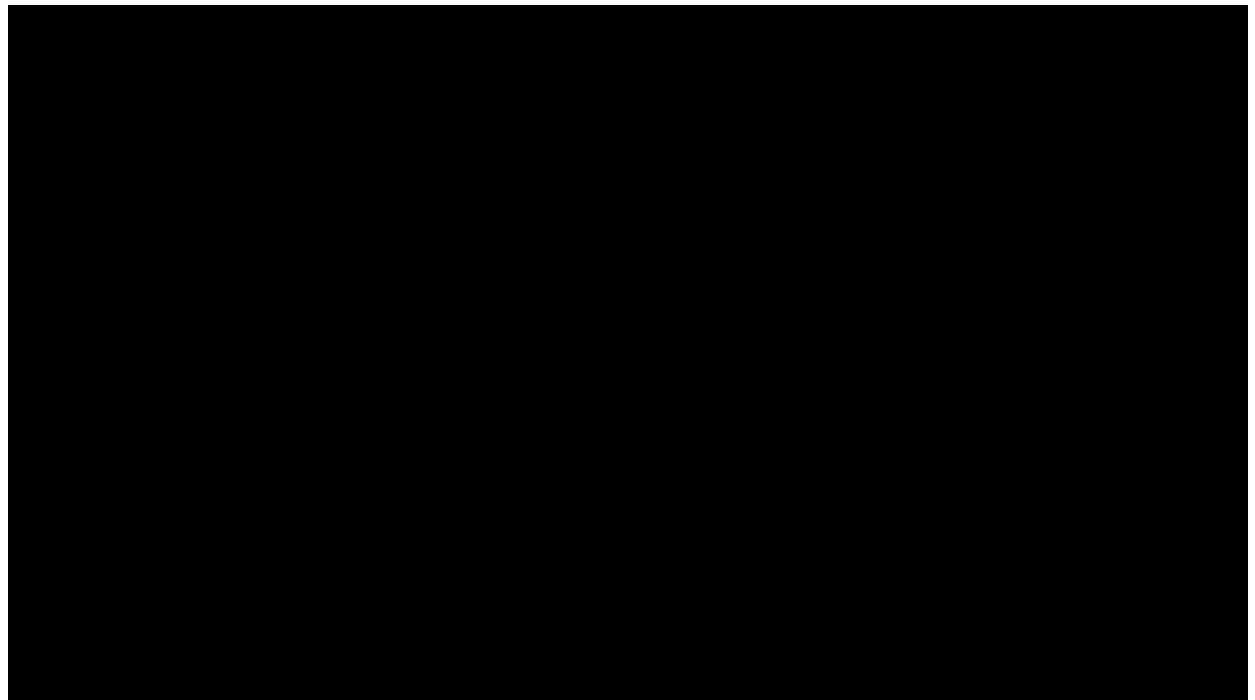
giz

28



giz

29



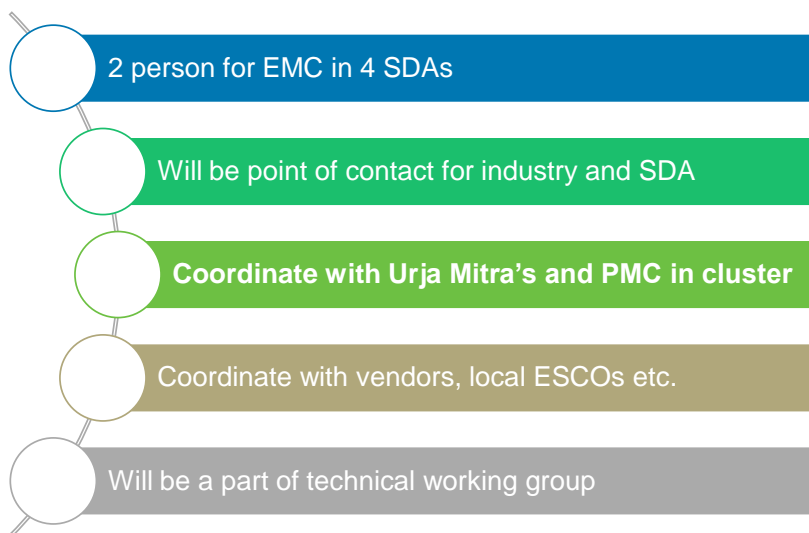
30

Activation of EMC



giz

31



giz

32

Urja Mitra orientation workshop

URJA MITRA



giz

33



GIZ India - Supporting Indo-German Development Cooperation

Page
34

34



35



36

Supporting SDA

2 SDA staffs of every SDA to be trained for AIP NPC, it will be an inhouse training of 2 days

4 peer learning actives in next four months

In house trainings for SDA man power on Energy Audit

Set up DIGI-TWIN training facilities in 2 SDA

Developed formats for implementation based TORs, EOIs, Empanelment etc.

Pge 37 | |

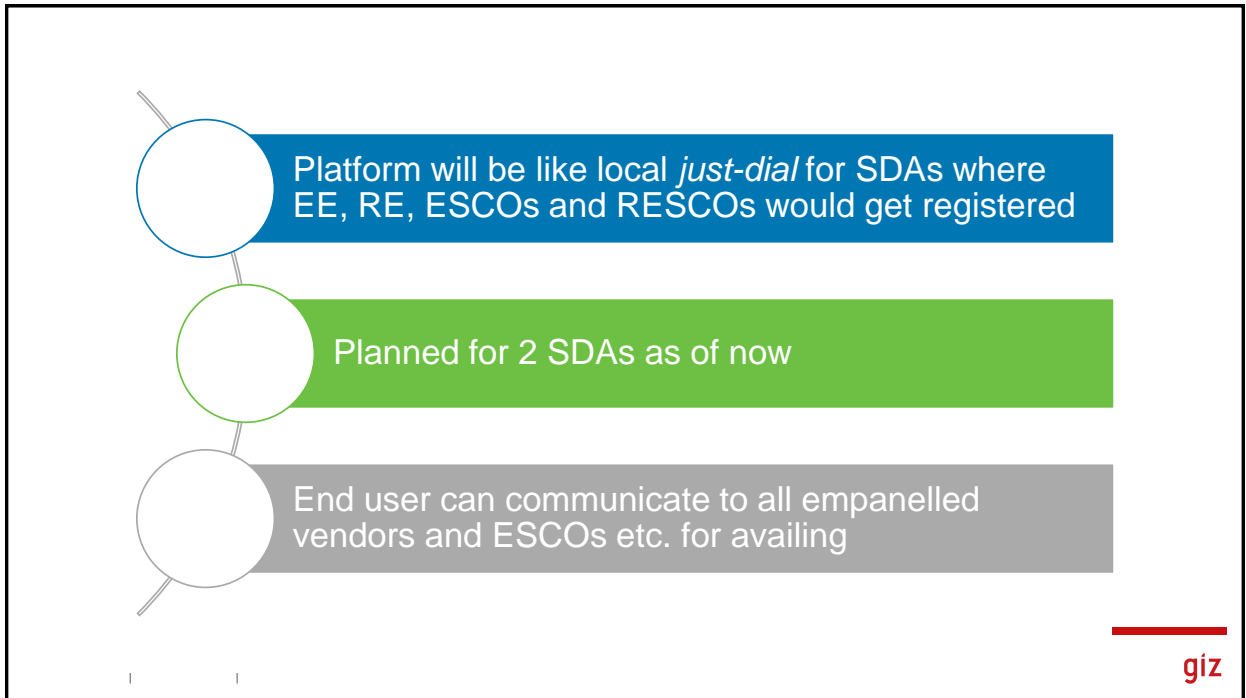
giz

37

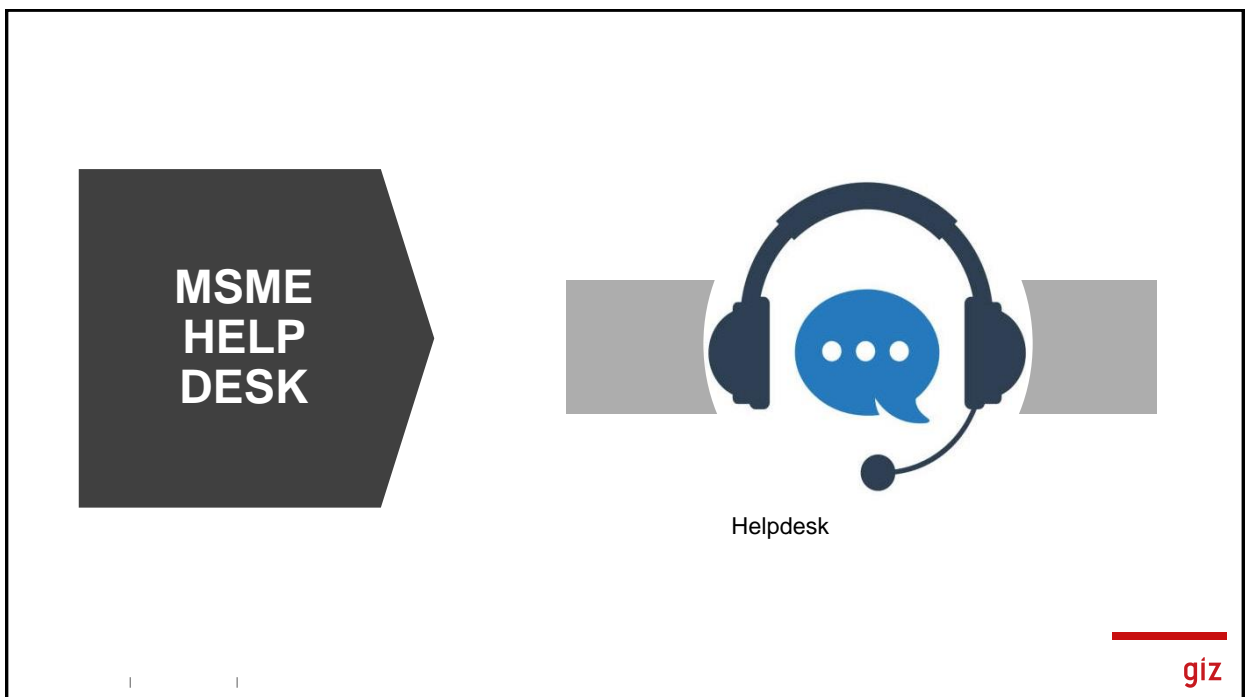


giz

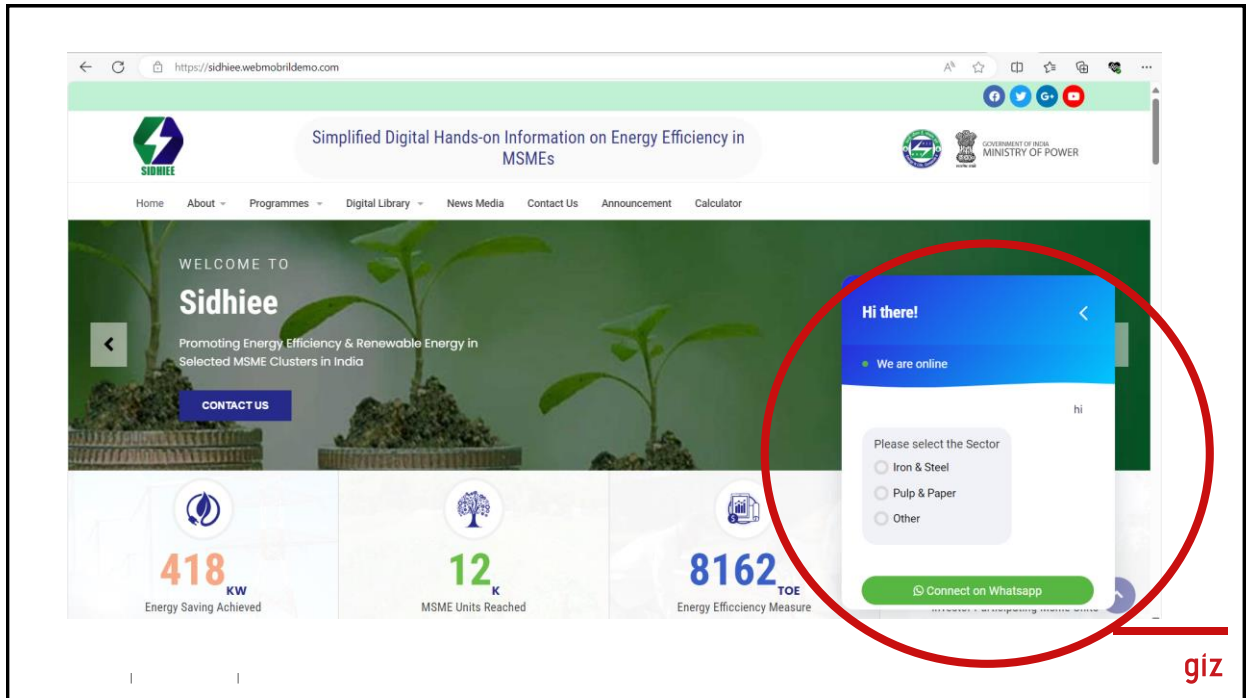
38



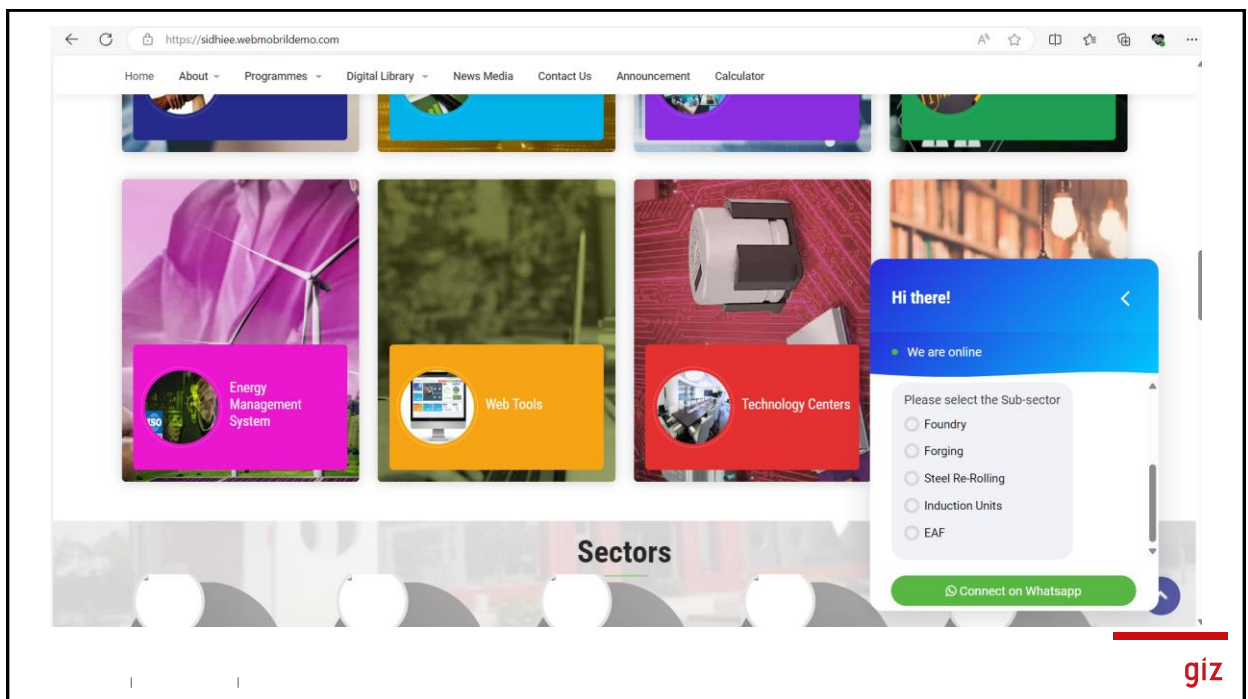
39



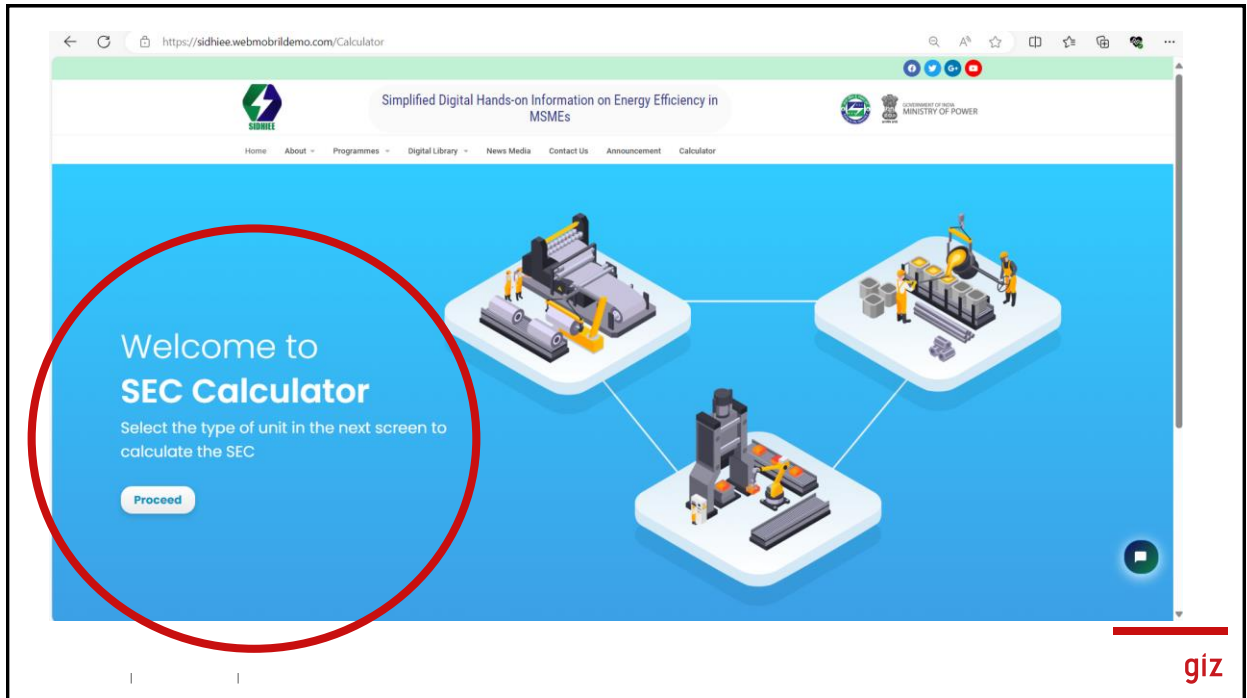
40



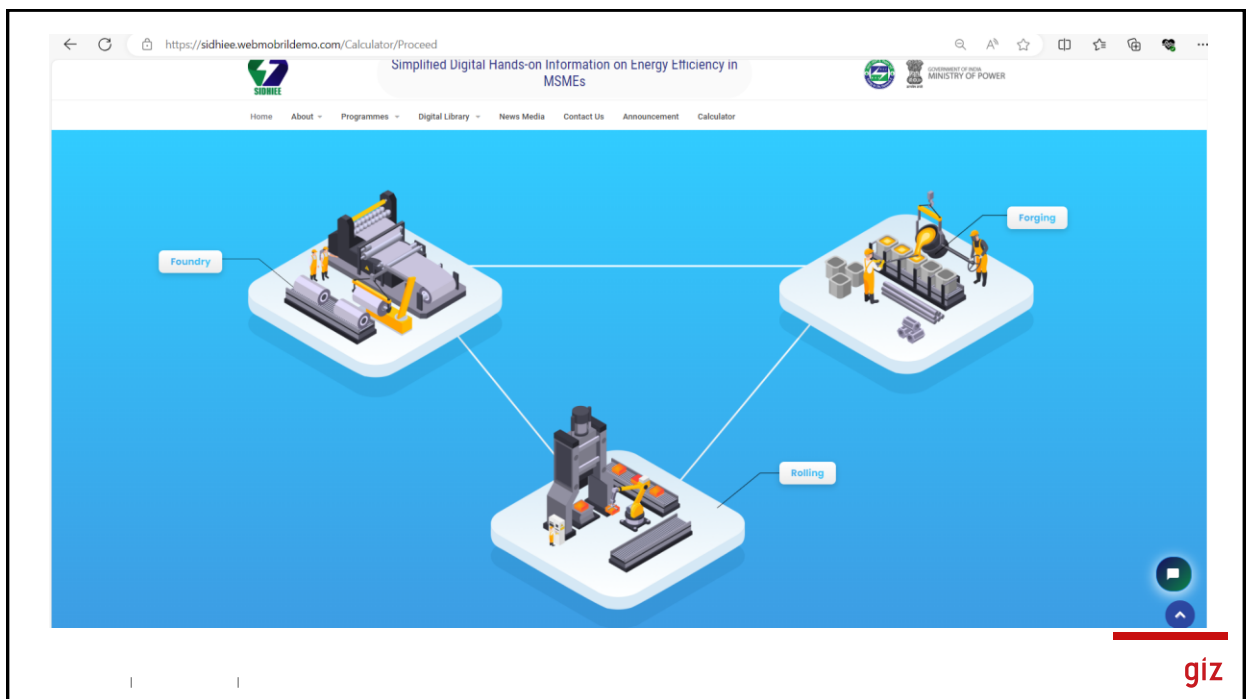
41



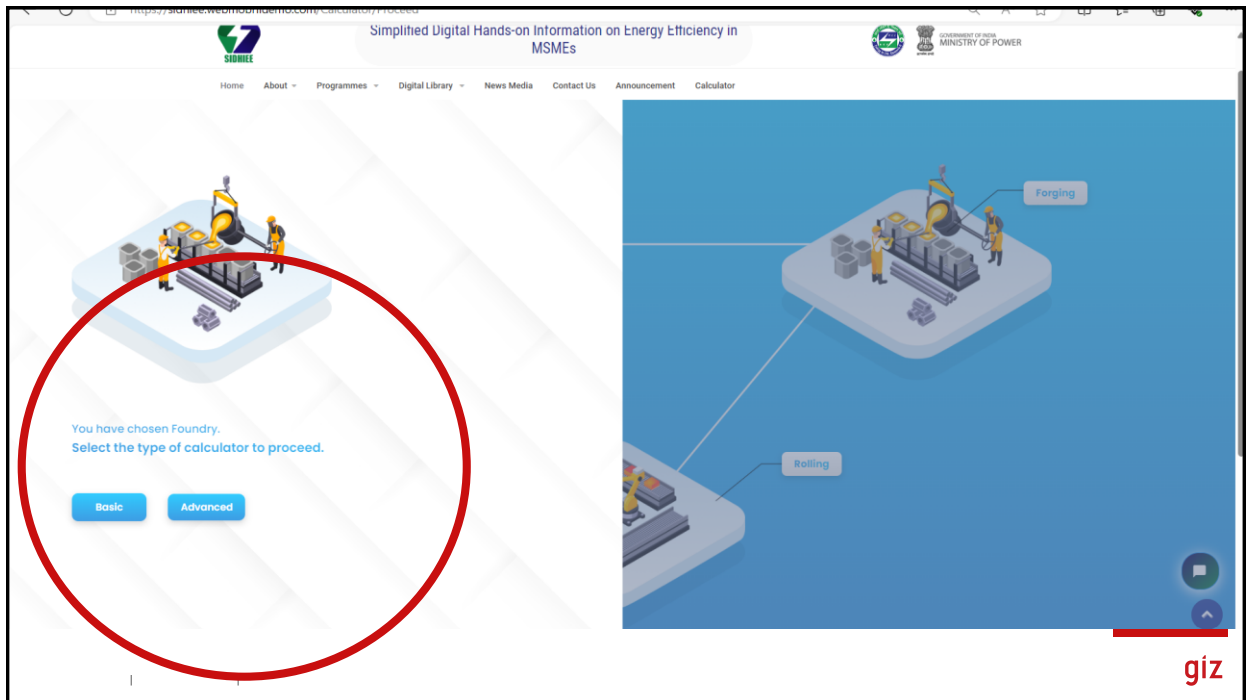
42



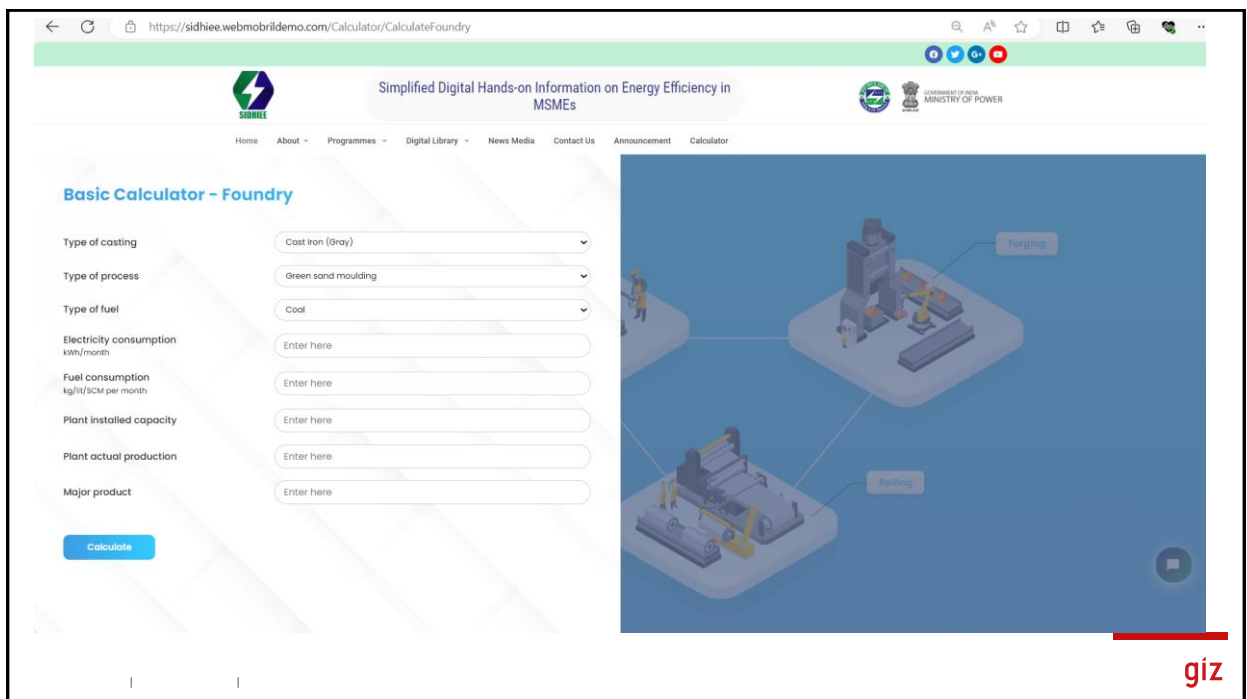
43



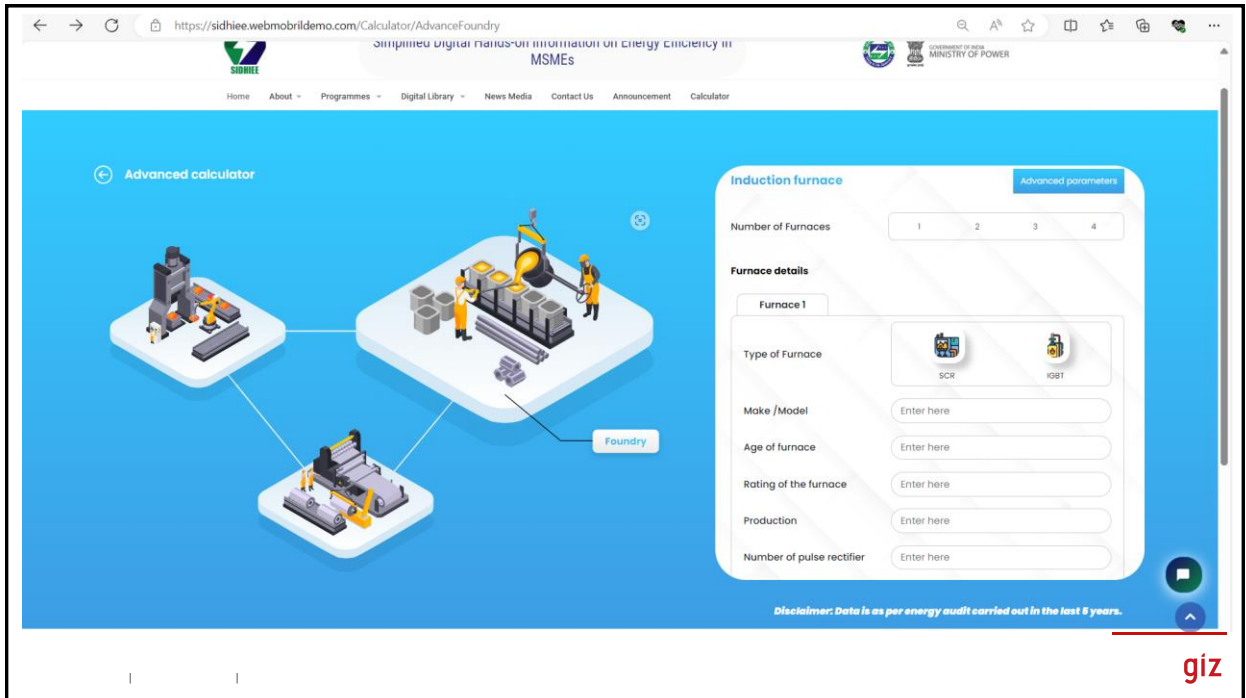
44



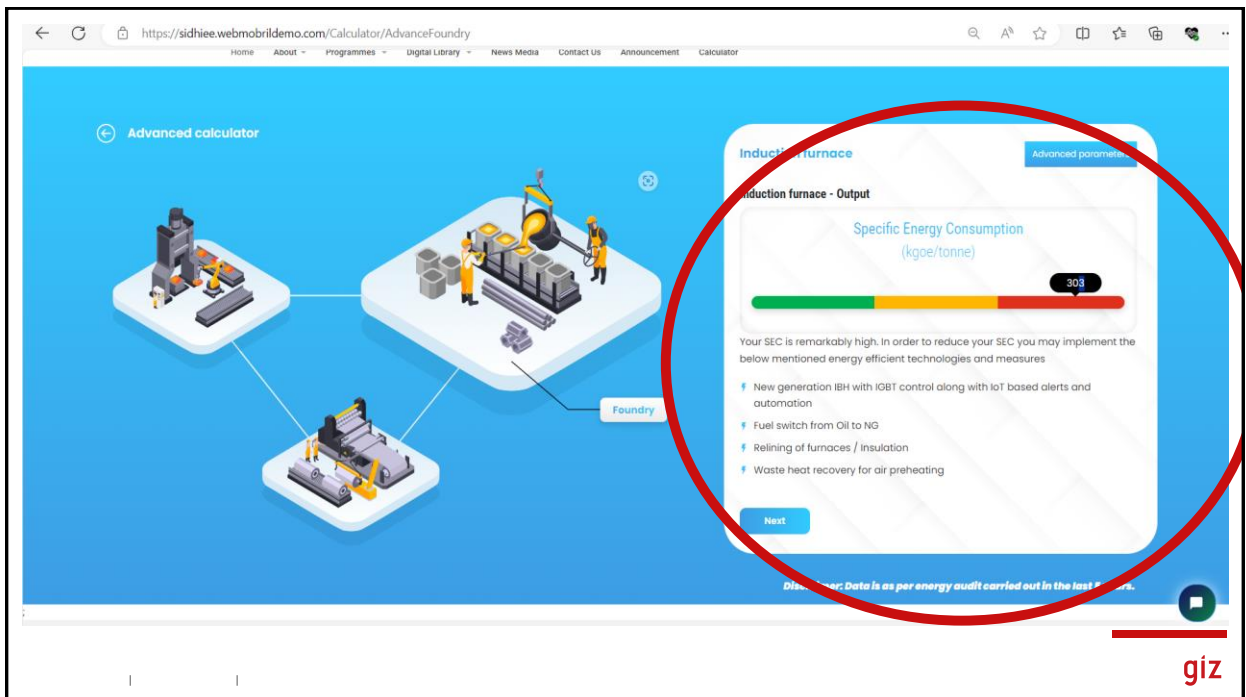
45



46



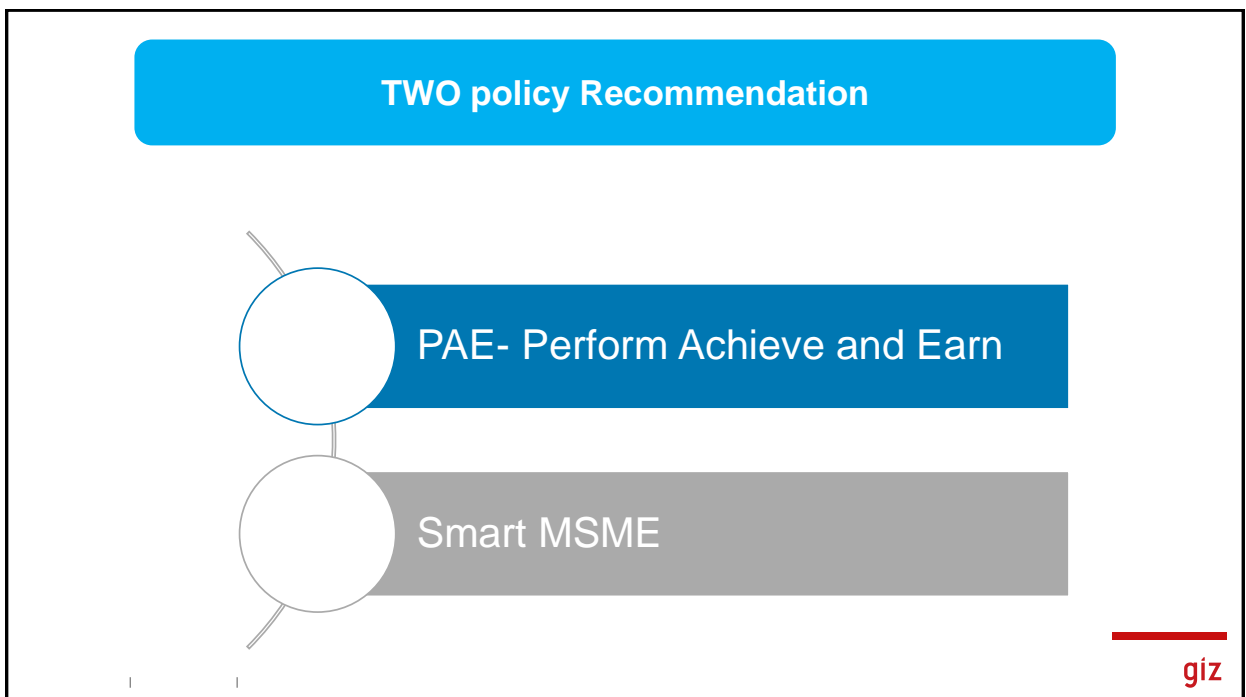
47



48



49



50



Thank you



giz